

Karla Black

Scotland + Venice 2011

Curated by The Fruitmarket Gallery

Hovering between energy and mass in the eight rooms of the Palazzo Pisani (S. Marina) is a solo exhibition of brand new 'almost objects' by the Scottish artist Karla Black. Intimately and painstakingly worked in situ into exquisitely detailed aesthetic forms, a still raw vastness of pure material and colour fills this 15th-century Venetian palace. These abstract sculptures - pulverised, atomised, piled, layered, supported, suspended and spilled out onto the floor - offer a visceral experience of absorption in the material world.

Karla Black prioritises material experience over language as a way to learn about and understand the world. Her sculptures are rooted in Kleinian psychoanalysis, and in formlessness as it has been understood at specific moments in art history. Inherent in the work is also a lively interest in recent scientific theories about the behaviour of the material world - in particular developments in physics that show how, at quantum level, a particle can be in two places at once. Only when the particle is observed does it settle for a single position. Karla Black is captivated by the idea of the quantum world as a world of possibilities where nothing has yet decided what it is or what it will do.

In this major solo exhibition, commissioned by Scotland + Venice and curated by The Fruitmarket Gallery, forms and compositions in Vaseline and marble dust, sugar paper and eye-shadow, soil, powder paint and plaster, polythene, cellophane and soap, in crumbling, peeling washes or dustings of high key mid-colours like peach, baby blue and pastel pink, provoke at least an impetus towards physical response. These sculptures are caught between thoughtless gestures and seriously obsessive attempts at beauty.

Scotland + Venice
4 Jun - 27 Nov
Palazzo Pisani (S.Marina)
Calle de le Erbe, Cannaregio 6103

Opening Hours / Orario
10am - 6pm (closed Mondays / chiuso il lunedì)
Free entry / Ingresso gratuito
www.scotlandandvenice.com

Scotland + Venice is a partnership between Creative Scotland, National Galleries of Scotland and British Council Scotland



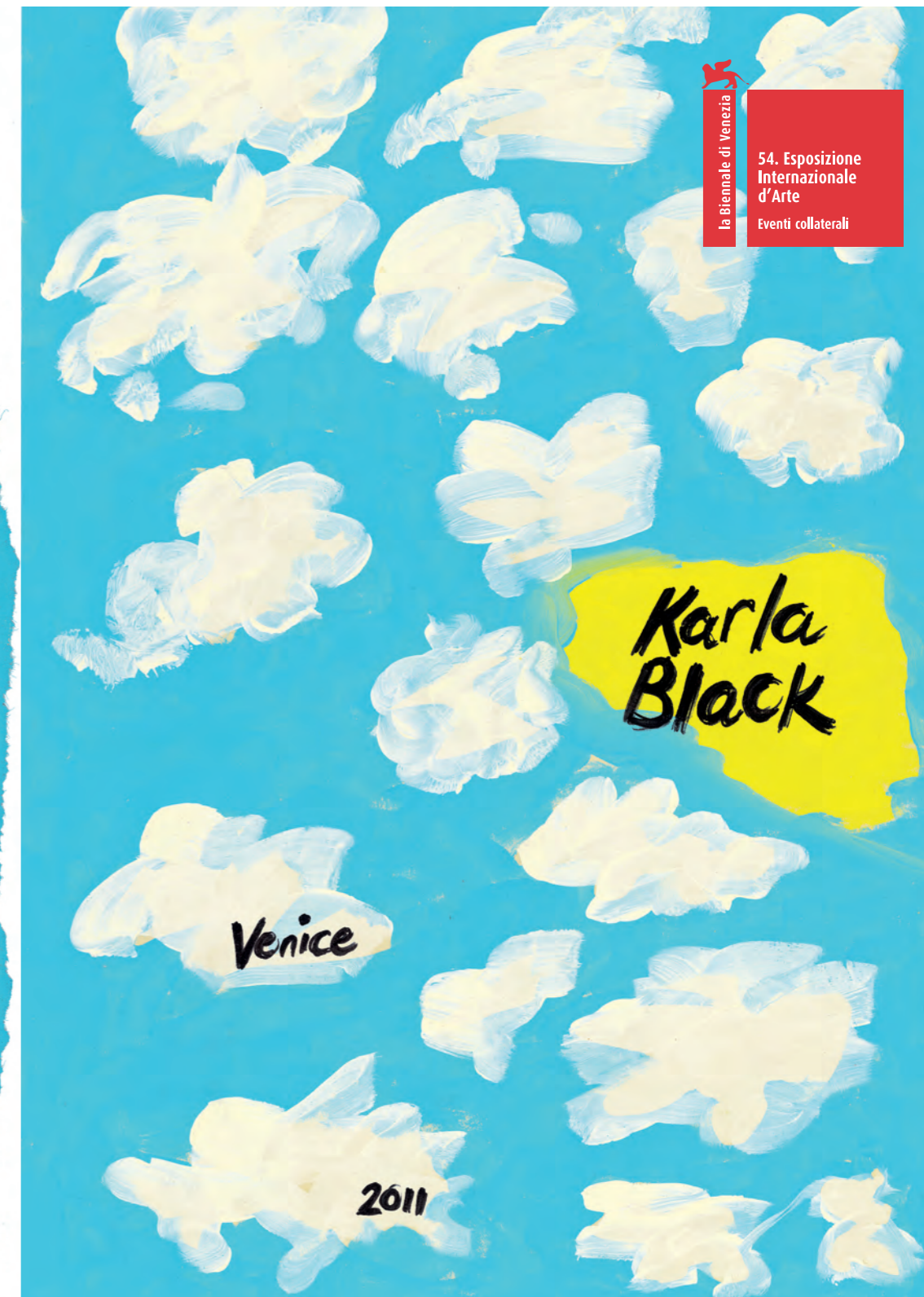
With additional support from



In kind support from



Professional Development Opportunity supported by Duncan of Jordanstone College of Art & Design and The Glasgow School of Art



la Biennale di Venezia
54. Esposizione Internazionale d'Arte
Eventi collaterali



1 Fondamente Nove to Palazzo Pisani (8 mins)

Turn left leaving the vaporetto stop

Cross Ponte Panada

After the bridge take the first right onto Ramo Calle Larga

At the end of the road head straight across onto Calle del Squero

Walk along Calle del Squero continuing on as it turns into Calle de la Testa

At the end of Calle de la Testa turn right onto Calle de le Erbe

Continue along Calle de le Erbe until you reach the entrance to Palazzo Pisani, the last black double doors on the left: No 6103 Calle de le Erbe.

2 Rialto to Palazzo Pisani (5 mins)

At Rialto vaporetto stop walk towards the Rialto Bridge

Walk up the steps on the same side of the canal

Take the first right walking past the stalls and down the steps on Salizada Pio X to Campo San Bartolomio

At Campo San Bartolomio, turn left and pass the statue of Carlo Goldoni (with the statue on your left)

Take Sotoportego de la Bissa on your right, following signs Per S. Marco

Cross Ponte S. Antonio, following signs Per S. Marco, and continue down Calle Al Ponte S. Antonio

At Campo S. Lio turn sharp left passing Chiesa S. Lio on your right, walking towards Calle Carminati

Cross Ponte del Pistor onto Calle del Pistor

Walk down Calle del Pistor and turn right onto Calle Malvasia

Turn left on Calle del Frutariol and walk on until arriving at Campo S. Marina

Walk into Campo S. Marina and turn left, crossing the Campo S. Marina passing the kiosk and the well heading towards the white building with the green shutters

Take the road on the right of the white building with the green shutters, Calle del Cristo

Cross Ponte del Cristo and Palazzo Pisani is facing you on the other side of the canal

Walk along with the Palazzo Pisani on your right

Take the second bridge Ponte e Calle de le Erbe (not the bridge leading to the shop)

The entrance to Palazzo Pisani is the black double doors on the right: No 6103 Calle de le Erbe.

3 Arsenale to Palazzo Pisani (15 mins)

From the exit of the Arsenale turn right down Campo della Tana passing a well

When you reach the canal turn left onto Fondamenta de l'Arsenale

Walk towards the main San Marco Canal and the bridge

Turn right and cross the bridge continuing down the waterfront on Riva Ca' Di Dio passing the Arsenale vaporetto stop

Continue along the waterfront, passing all the San Zaccaria vaporetto stops

Pass the Church of S. Maria della Pietà and the equestrian statue

Cross the bridge leading to the Hotel Danieli, opposite the San Zaccaria Danieli vaporetto stop

Pass the Hotel Danieli taking the first right after the hotel onto Calle de le Rasse, following the sign to Ospedale S.S. Giov. e Paolo

Walk down Calle de le Rasse

At the end of the road turn left again following the sign to Ospedale S.S. Giov. e Paolo

Arriving in Campo S.S. Filippo e Giacomo take a sharp right walking towards the Hotel Rio (the orange building with the green shutters), with the kiosks on your left, onto the Calle Rimpeto la Sacrestia

Continue along Calle Rimpeto la Sacrestia

As you continue down Calle Rimpeto la Sacrestia it becomes Calle Drio la Chiesa

Continue towards a small bridge which crosses over towards the hotel Casa Verardo

Cross the bridge onto Calle Castagna

At the end of Calle Castagna turn left at the lighting shop and walk along Rugaggiuffa (not marked with a sign here)

Cross the bridge to Campo S. Maria Formosa. Walk straight across (keeping to the right) towards the Ruzzini Palace Hotel

Take the road to the right of the Ruzzini Palace Hotel crossing the small bridge, Ponte Borgoloco

Walk through the small square to Calle de Borgoloco

Cross Ponte Marcello onto Calle Marcello

Continue along Calle Marcello until you reach Campo S. Marina and turn right heading towards the white building with the green shutters.

Take the road on the right of the white building with the green shutters, Calle del Cristo

Cross Ponte del Cristo and Palazzo Pisani is facing you on the other side of the canal

Walk along Fondamenta Van Axel o de le Erbe with the Palazzo Pisani on your right

Take the second bridge Ponte e Calle de le Erbe (not the bridge leading to the shop)

The entrance to Palazzo Pisani is the black double doors on the right: No 6103 Calle de le Erbe.